



# Open Road

Exclusively for Interface  
by David Oakey Designs

---

Come and Go  
Free Reign

---

**Interface®**

**Explore nature. Embrace adaptability.**

Chart your own path with infinite design possibilities. Open Road™ is a fast pass to integrating flexibility into commercial spaces.

The collection creates movement across a floor with two carpet tile styles that embrace the randomness of nature. As part of our i2™ product portfolio, every Open Road tile is varied, meaning each install is unique. It features Free Reign™, an organic style that explores pattern variation, and Come and Go™, a geometric design that experiments with colour contrast. Every tile blends together effortlessly, regardless of when it was purchased or installed, supporting selective replacement and resulting in a unique, adaptable floorscape that looks beautiful now and for years to come.

These styles tap into industry-leading innovations as a part of Interface's Open collective, a toolkit of carpet tile solutions that are made to be as design-forward as they are accessible. Open products explore endless patterns and scales and deliver style and performance with every installation – all at a smart price point.





PRODUCT FREE REIGN COLOUR BORDEAUX INSTALLED ASHLAR



PRODUCT COME AND GO COLOUR OAT INSTALLED NON DIRECTIONAL  
PRODUCT FREE REIGN COLOUR BRICK INSTALLED ASHLAR

## Come and Go™ Colour Range



1871001 GRANITE



1871002 HICKORY



1871003 AMBER



1871004 SHELL



1871005 EBONY



1871006 NATURAL



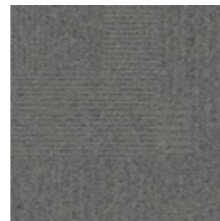
1871007 OAT



1871008 STONE



1871009 BLACK



1871010 FLANNEL



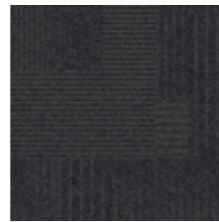
1871011 NICKEL



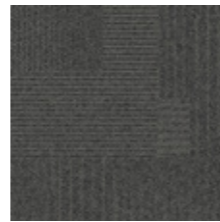
1871012 LINEN



1871013 NAVY



1871014 IRON



1871015 CHARCOAL



1871016 MIST



1871017 INDIGO



1871018 TURQUOISE



1871019 PINE



1871020 SPRUCE



1871021 AMETHYST



1871022 BORDEAUX



1871023 CAYENNE



1871024 BRICK



PRODUCT COME AND GO COLOUR PINE INSTALLED NON DIRECTIONAL

## Specifications

Style Code	1871
Product Construction	Tufted Patterned Textured Loop Pile
Yarn System	100% Recycled Solution Dyed Nylon
Machine Gauge	1/12
Pile Thickness	2.9mm (± 0.5mm) (Asia)   3.0mm (± 0.5mm) (Australia & New Zealand)
Total Thickness	6.6mm (± 0.5mm) (Asia)   6.0mm (± 0.5mm) (Australia & New Zealand)
Tile Size	50 x 50 cm
Area of Use	Commercial Heavy Use
ACCS Grading (Australia & New Zealand Only)	Commercial Extra Heavy Duty & Stairs
Lifetime Antimicrobial	Intersept®
Soil / Stain Protection	Protekt <sup>2</sup> ®

View the full product specification on [interface.com](https://www.interface.com)

## Installation Method



NON DIRECTIONAL



## Free Reign™ Colour Range



1870001 GRANITE



1870002 HICKORY



1870003 AMBER



1870004 SHELL



1870005 EBONY



1870006 NATURAL



1870007 OAT



1870008 STONE



1870009 BLACK



1870010 FLANNEL



1870011 NICKEL



1870012 LINEN



1870013 NAVY



1870014 IRON



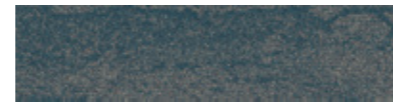
1870015 CHARCOAL



1870016 MIST



1870017 INDIGO



1870018 TURQUOISE



1870019 PINE



1870020 SPRUCE



1870021 AMETHYST



1870022 BORDEAUX



1870023 CAYENNE



1870024 BRICK



PRODUCT FREE REIGN COLOUR CAYENNE & NICKEL INSTALLED ASHLAR

## Specifications

Style Code	1870
Product Construction	Tufted Patterned Textured Loop Pile
Yarn System	100% Recycled Solution Dyed Nylon
Machine Gauge	1/12
Pile Thickness	2.8mm (± 0.5mm) (Asia)   3.0mm (± 0.5mm) (Australia & New Zealand)
Total Thickness	6.4mm (± 0.5mm) (Asia)   6.0mm (± 0.5mm) (Australia & New Zealand)
Tile Size	25 x 100 cm
Area of Use	Commercial Heavy Use
ACCS Grading (Australia & New Zealand Only)	Commercial Extra Heavy Duty & Stairs
Lifetime Antimicrobial	Intersept®
Soil / Stain Protection	Protekt <sup>2</sup> ®

View the full product specification on [interface.com](https://interface.com)

## Installation Methods





## Why Our Modular Flooring?



### Modular Flooring

*Performance and flexibility.* Interface's standard backing systems set the industry standard for modular performance. Tiles stay on the floor with no upcurl, no tapping and no rippling effect, yet are easy to selectively replace. Our modular carpet is easier to handle than bulky roll carpet and produces an average of just 2-5% waste compared to roll carpet's average of 15%. And it installs seamlessly with our LVT, no transition strips needed.



### ReEntry

At Interface, an *end of life solution* of our products is a reality. ReEntry is our innovative programme to reclaim materials used in our product. Taking back our product at end of life is a service we provide our customers to ensure that none of the products they use will end up in landfill. Whether it is recycling into new product or re-purposing, we see our customer's waste as an opportunity for new product life.



### TacTiles®

*No glue installation.* Our revolutionary TacTiles installation system eliminates the need for glue, adhering tiles securely together to form a floor that "floats" for greater flexibility, easier replacement and long-term performance. The result? Less mess, less waste and virtually no VOCs, not to mention an environmental footprint that is over 90% lower than that of traditional glue adhesives.



### Intersept®

*Mold protection.* Our proprietary preservative, Intersept, protects our modular carpet against mould growth and odour-causing bacteria—guaranteed. Intersept treated carpet, with proper maintenance, shows no mould or bacterial growth when tested as per the ASTM E2471 Standard Test Method. Intersept is EPA-approved for safe use in carpet, water insoluble and contains no halogens, heavy metals, phenols or formaldehyde.



### Protekt®

*Stain protection.* The life and performance of your flooring is extended with Protekt<sup>2</sup>, our patented stain resistant protection. Protekt<sup>2</sup> uses advanced technology to provide a lasting barrier against permanent soiling and staining, which simplifies the cleaning process and enhances the longevity of your carpet. Protekt<sup>2</sup> is product specific, please refer to individual product specifications for details.



### Health Product Declaration (HPD) –

A transparency tool for evaluating whether a product supports Green Chemistry. As part of our work on Health and Materials, Interface continuously reduces the environmental and health impacts of our products through elimination of materials of concern.



### 15-Year Warranty

Interface products are warranted for 15 years against excessive surface wear, edge ravel, backing separation, shrinking, stretching and static electricity even under castor chair conditions.



### Local Manufacturing

We combine local responsiveness with a global experience. Being part of the same communities as our customers, we foster collaborative, committed, and productive relationships. Our carpet tiles are manufactured in Australia and China, contributing to local economies and the environment.



### i2™ Modular Carpet

*Minimise waste & save money.* Interface's i2™ styles have mergeable dye lots. That means i2 tiles from different dye lots always blend with tiles of the same colour, even when individual tiles are selectively replaced years later. This minimises the need for attic stock and saves money. And i2 styles that install non directionally generate an average of only 1.5% installation waste as compared to 3-4% for typical modular carpet and an average of 14% for traditional roll carpet.

All Interface manufacturing facilities in the Asia Pacific region maintain registration to ISO 9001 Quality Management Systems and ISO 14001 Environmental Management Systems.

## Third Party Certifications



### Environmental Product Declaration (EPD)

The Environmental Product Declaration (EPD) is a third party verified environmental certification classified as Type III that quantifies and verifies the lifecycle impacts of products and goods according to the International Standards Organization (ISO) 14025, 14040, 14044 and EN 15804. EPDs help customers that are environmentally driven to evaluate the performance of a product and to make the best decision when choosing a product. Interface EPDs can be found on [interface.com](http://interface.com).



### Global GreenTag GreenRate - Level A

Global GreenTag's GreenRate certification is a product rating system recognised by the Green Building Council of Australia and Green Building Council of New Zealand. Its assessment scheme aligns to the Green Star® Responsible Products program. All Interface products are certified "Level A".



### Best Practice Guidelines for PVC

Our product proudly holds the Best Environmental Practice (BEP) PVC certification, a recognition of compliance with stringent environmental and social criteria in PVC manufacturing. This certification is a key contributor to Green Star certification, aligning with the GBCA's Responsible Products Framework. Our commitment to BEP guidelines demonstrates our dedication to environmental responsibility and product excellence.



### Singapore Green Building Product (SGBP)

The SGBP certification is designed to evaluate and certify building products that meet specific sustainability and environmental performance criteria. The certification scheme helps building professionals identify products that are sustainable and more carbon efficient. Interface carpet tile products are certified "Leader" and LVT products are at "Excellent" Level.



### NSF Certification

NSF International develops public health standards and certification programs that help protect the world's food, water, consumer products and environment. Interface carpet tile products are certified "Gold".



### CRI Green Label Plus

The Carpet and Rug Institute (CRI) Green Label Plus sets higher standards for indoor air quality and ensures that customers are purchasing the very lowest emitting products on the market. Interface Carpet Tiles and TacTiles have fulfilled the requirements for this certification.

### Do more on [interface.com](http://interface.com)

- Browse products, save and share favourites
- See images of products in a variety of room scenes
- Browse floor designs, change colours, upload your own image, download and share
- Get full specifications, sustainability certifications and more
- Sign up to get the latest information on Interface products and news

Our EPDs and certifications contribute credits towards Green Building Council's Green Star® Responsible Products program.

Green Star is the Green Building Council of Australia's sustainability rating system for the built environment. It is used to rate new and existing buildings, new fit-outs, and new precinct developments. The Green Building Council of Australia recognises Responsible Products that may contribute to a Green Star rating through its Responsible Credits.

We have tried our very best to accurately represent product colours. However, due to the nature of printed materials, colour of actual products may vary slightly. Please request a sample to see actual product colour.

Production specifications are subject to normal manufacturing tolerances and may be changed without notice. The visibility of joints may vary based on colour and pattern. Slight variation in colour among different production lots are normal and should be considered in the overall installation plan. Products covered by manufacturer's written warranty only. All other warranties, including without limitation any implied warranties of merchantability or fitness for particular purpose, are hereby disclaimed. Contact your representative for written warranty information.



**[www.interface.com](http://www.interface.com)**

**Australia**

Interface Australia  
local toll free: 1800 804 361

**India**

Interface India  
tel: +91 76249 17934

**South East Asia**

Interface Asia  
tel: +65 6478 1510

**South Korea**

Interface South Korea  
tel: +82 2 555 1734

**Japan**

Interface Japan  
tel: +81(0)3-6892-5513

**Beijing**

Interface China  
tel: +86 10 6590 7810

**Hong Kong**

Interface China  
tel: +852 2802 0838

**Shanghai**

Interface China  
tel: +86 21 6340 3868